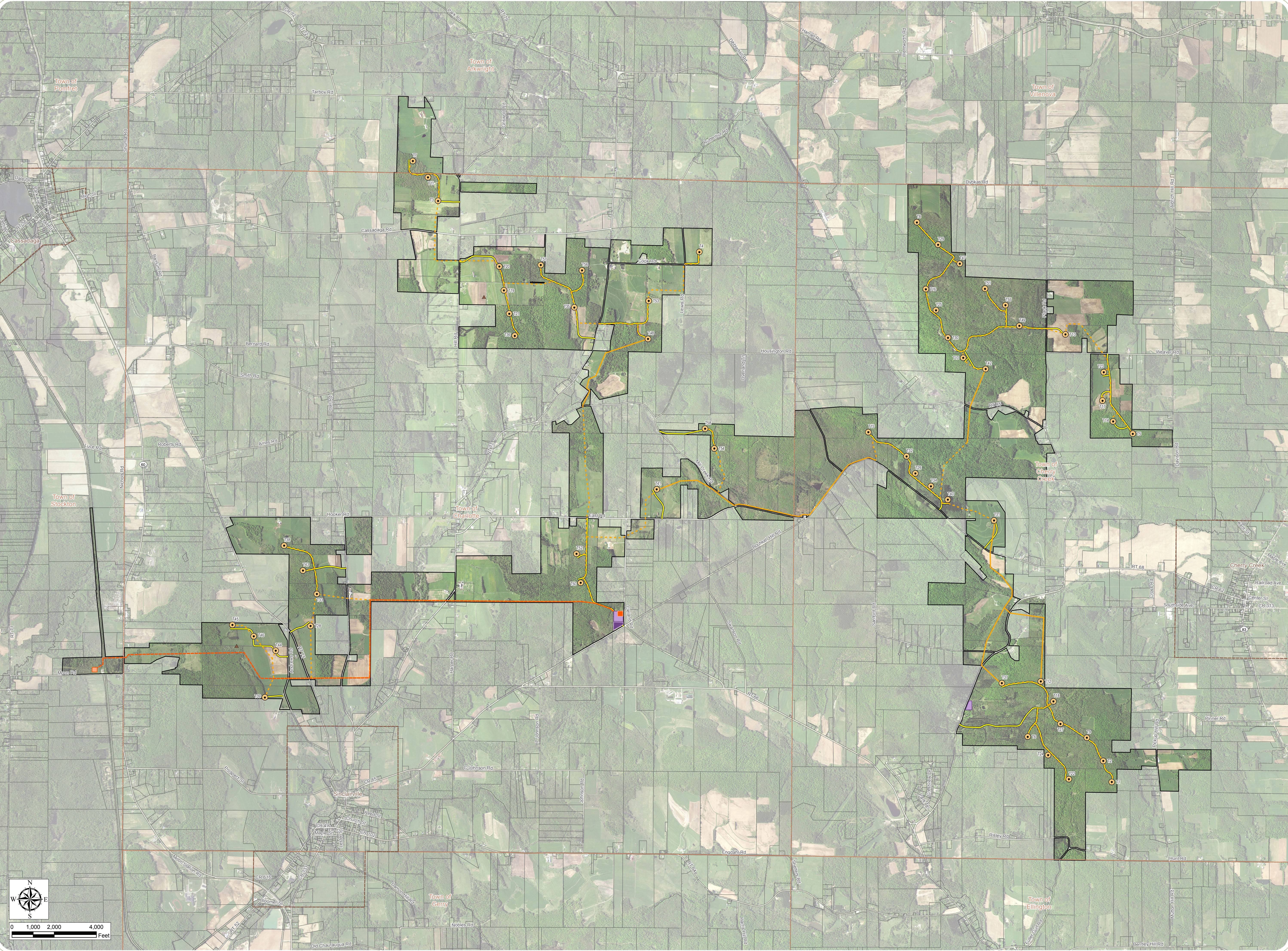


Cassadaga Wind Project

Towns of Arkwright, Charlotte, Cherry Creek, and Stockton - Chautauqua County, New York

Article 10 Application Figure 2-2: Facility Layout

April 2016



- Wind Turbine
- Permanent Meteorological Tower
- 115 kV Generator Lead Line
- Underground Collection Line
- Overhead Collection Line
- Access Road
- Laydown Yard/Staging Area
- O&M Building
- Collection Substation
- POI Substation
- Facility Site
- Parcel Boundary
- Village Boundary
- Town Boundary
- County Boundary

Notes:
1. Basemap: USDA FSA NAIP "2015 New York 0.5m" Map Service Layer.
2. If facility construction requires use of a temporary concrete batch plant, it will be located at the Laydown Yard/Staging Area.
3. This is a color graphic. Reproduction in grayscale may misrepresent the data.

everpower™



www.edrdpc.com