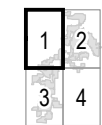


Baron Winds Project
 Towns of Cohocton, Dansville, Fremont, and
 Wayland - Steuben County, New York

Article 10 Application

Figure 13-1: Real Property Map of Generating Site

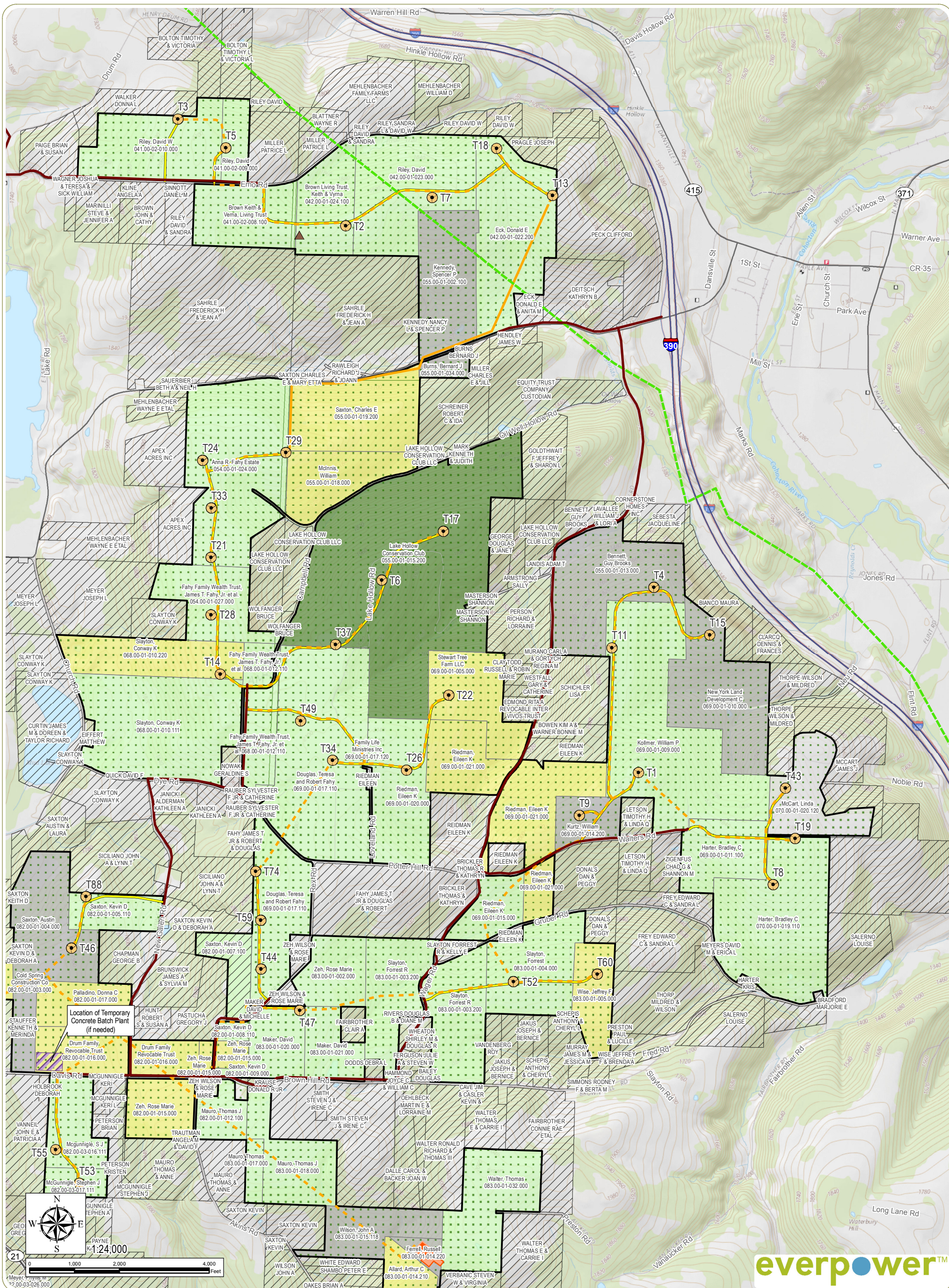


Sheet 1 of 4

Notes: 1. Basemap: "USGS TNM Topo Base Map" displayed via the USGS Topo Map Service; Steuben County parcel data. 2. This map was generated in ArcMap on November 21, 2017. 3. This is a color graphic. Reproduction in grayscale may misrepresent the data.

- | | | |
|-------------------------------|--|-----------------|
| Proposed Wind Turbine | Laydown Yard | Land Use |
| Buried Collection Line | Facility Site | Agricultural |
| Overhead Collection Line | Adjacent Parcel | Residential |
| Access Road | Facility Parcel Zoning District | Uncategorized |
| Proposed Transportation Route | Agricultural-Residential | Vacant Land |
| Hazardous Liquid Pipeline | No Zoning | |





Baron Winds Project
 Towns of Cohocton, Dansville, Fremont, and
 Wayland - Steuben County, New York

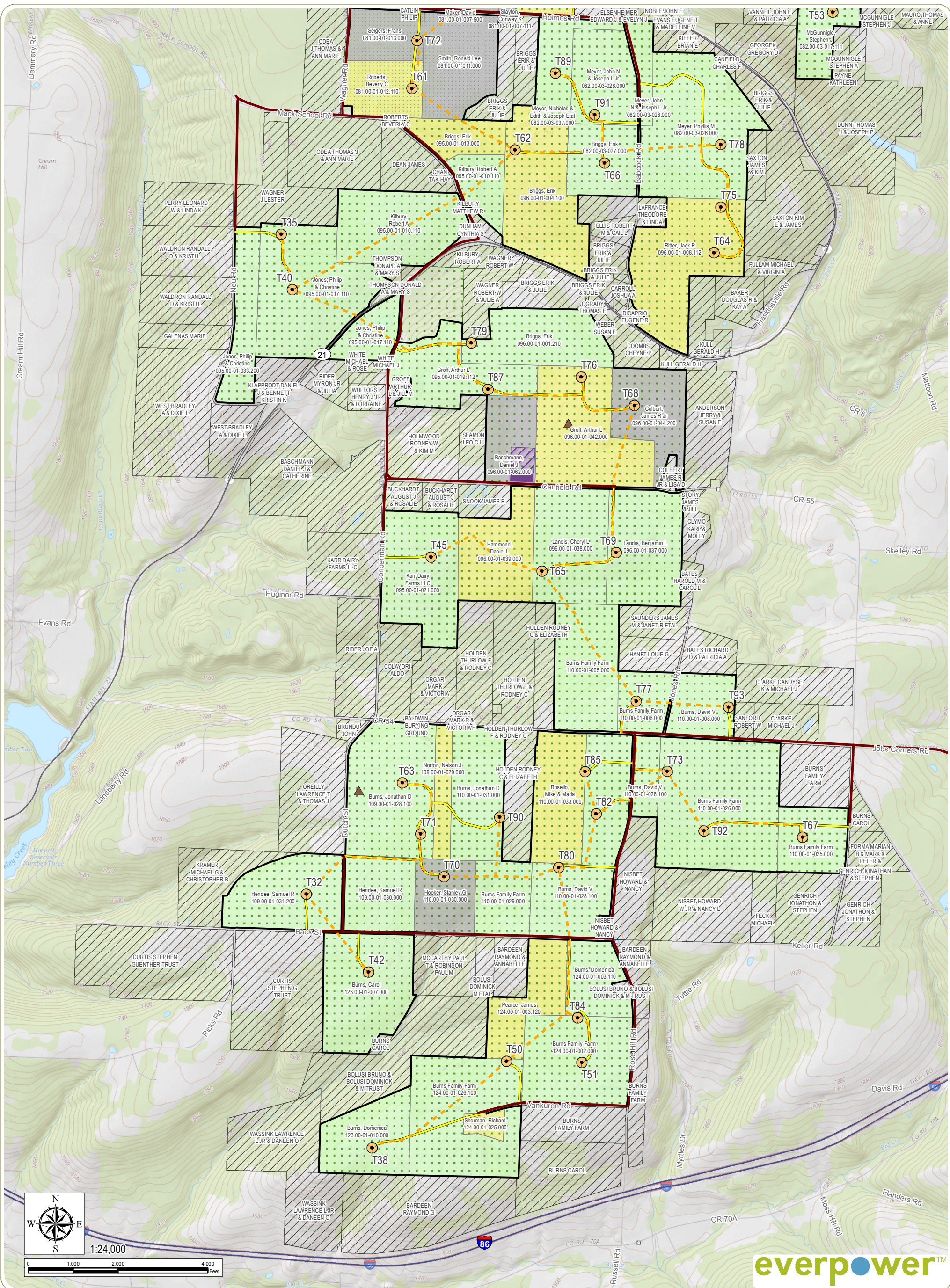
Article 10 Application
Figure 13-1: Real Property Map of Generating Site

Notes: 1. Basemap: "USGS TNM Topo Base Map" displayed via the USGS Topo Map Service; Steuben County parcel data. 2. This map was generated in ArcMap on November 21, 2017. 3. This is a color graphic. Reproduction in grayscale may misrepresent the data.

1 2
 3 4
 Sheet 2 of 4

- Proposed Wind Turbine
- ▲ Permanent Met Tower
- - - Buried Collection Line
- Overhead Collection Line
- Access Road
- Proposed Transportation Route
- Hazardous Liquid Pipeline
- Laydown Yard
- Collector Substation
- POI Substation
- Facility Site
- Adjacent Parcel
- Facility Parcel Zoning District
- Agricultural-Residential
- Land Use
 - Agricultural
 - Residential
 - Uncategorized
 - Vacant Land
 - Wild, Forested, Conservation Lands & Public Parks





everpower™

Baron Winds Project
 Towns of Cohocton, Dansville, Fremont, and
 Wayland - Steuben County, New York

Article 10 Application

Figure 13-1: Real Property Map of Generating Site

Notes: 1. Basemap: "USGS TNM Topo Base Map" displayed via the USGS Topo Map Service; Steuben County parcel data. 2. This map was generated in ArcMap on November 21, 2017. 3. This is a color graphic. Reproduction in grayscales may misrepresent the data.

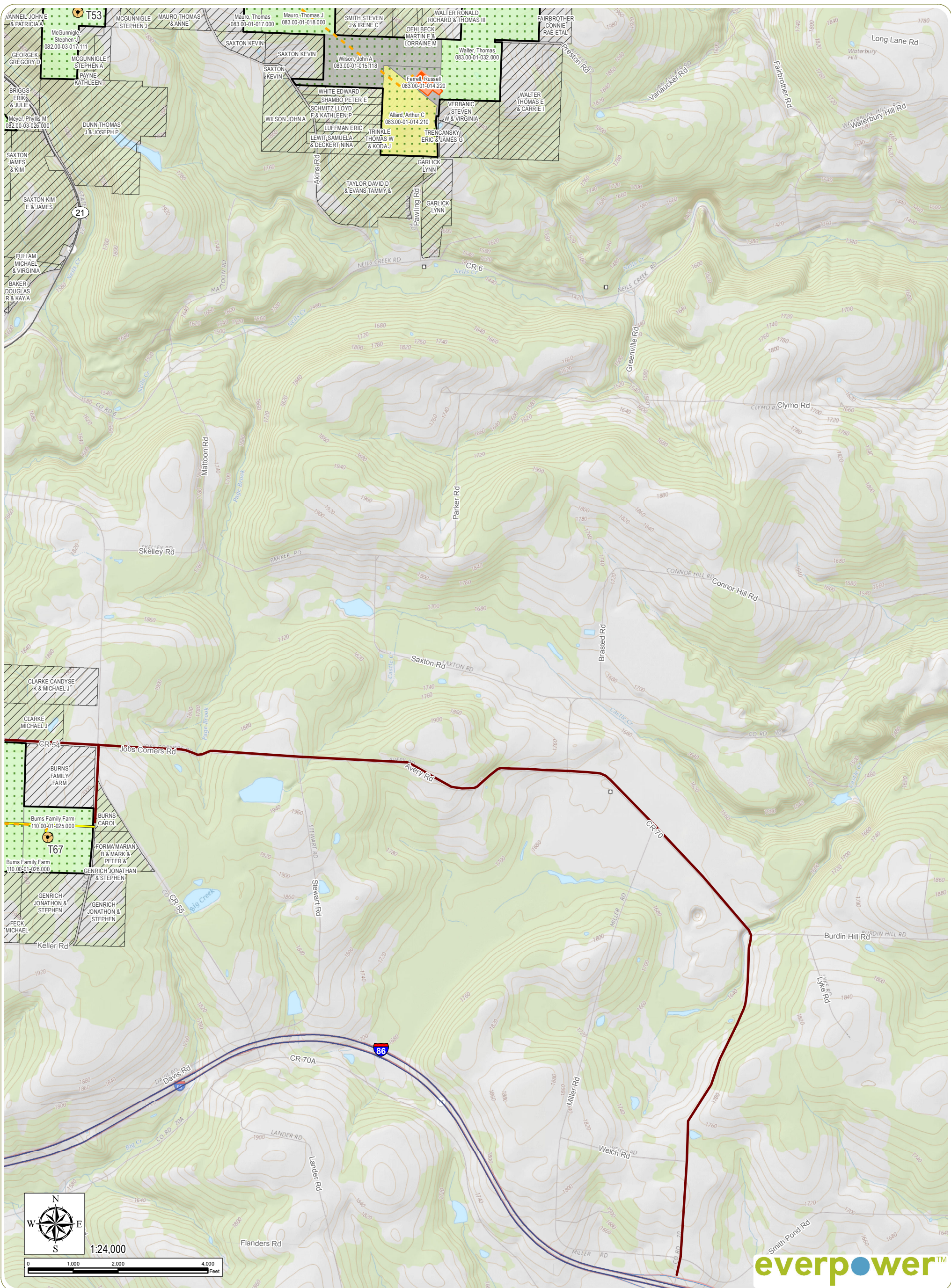
1	2
3	4

Sheet 3 of 4

- Proposed Wind Turbine
- Permanent Met Tower
- Buried Collection Line
- Access Road
- Proposed Transportation Route
- Laydown Yard
- O&M Building
- Facility Site
- Adjacent Parcel
- Facility Parcel Zoning District
- Agricultural-Residential
- No Zoning
- Land Use: Agricultural
- Land Use: Residential
- Land Use: Uncategorized
- Land Use: Vacant Land



www.edrdpc.com

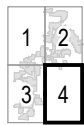


Baron Winds Project
 Towns of Cohocton, Dansville, Fremont, and
 Wayland - Steuben County, New York

Article 10 Application

Figure 13-1: Real Property Map of Generating Site

Notes: 1. Basemap: "USGS TNM Topo Base Map" displayed via the USGS Topo Map Service; Steuben County parcel data. 2. This map was generated in ArcMap on November 21, 2017. 3. This is a color graphic. Reproduction in grayscale may misrepresent the data.



Sheet 4 of 4

- | | | |
|-------------------------------|--|-----------------|
| Proposed Wind Turbine | Laydown Yard | Land Use |
| Buried Collection Line | Collector Substation | Agricultural |
| Access Road | POI Substation | Residential |
| Proposed Transportation Route | Facility Site | Vacant Land |
| | Adjacent Parcel | |
| | Facility Parcel Zoning District | |
| | Agricultural-Residential | |
| | No Zoning | |



www.edrdpc.com