

**Baron Winds Project**  
 Towns of Cohocton, Dansville, Fremont, and  
 Wayland - Steuben County, New York  
 Article 10 Application  
**Figure 19-1: Sensitive Sound  
 Receptors**

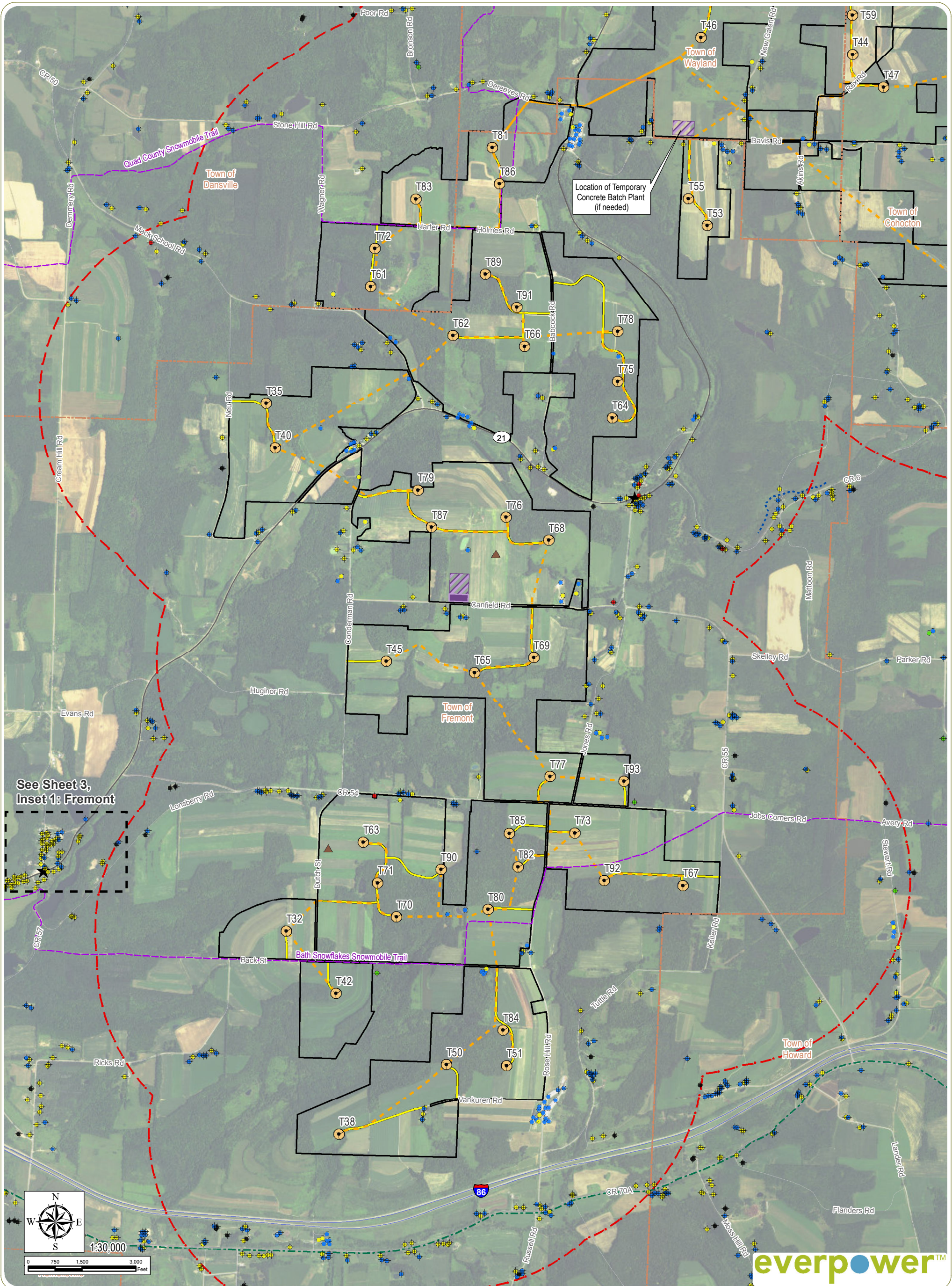
Sheet 1 of 3

- |                       |                                  |                              |                           |
|-----------------------|----------------------------------|------------------------------|---------------------------|
| <b>Structure</b>      | ● Wind Turbine                   | --- Buried Collection Line   | ■ POI Substation          |
| ● Residential         | ▲ Permanent Met Tower            | --- Overhead Collection Line | ■ Collector Substation    |
| ● Cabin               | ★ Hamlet                         | --- Access Road              | ■ O&M Building            |
| ● Non - Residential   | --- Trail                        | ■ School                     | ■ Laydown Yard            |
| ● Commercial          | --- Bike Route                   | ■ Local Park                 | --- 1-Mile Study Area     |
| ● Unknown             | --- NYSDEC Public Fishing Stream | ■ NYSDEC Land                | ■ Facility Site           |
| ⊕ Non - Participating |                                  | ■ Scenic Overlook            | --- City/Village Boundary |
| ○ Participating       |                                  | ■ Other Local Resource       | --- Town Boundary         |
|                       |                                  |                              | --- County Boundary       |

**Notes:** 1. Basemap: ESRI ArcGIS Online "World Imagery" map service. 2. This map was generated in ArcMap on November 20, 2017. 3. Structure receptor data dated October 17, 2017. 4. This is a color graphic. Reproduction in grayscale may misrepresent the data.







**Baron Winds Project**  
 Towns of Cohocton, Dansville, Fremont, and Wayland - Steuben County, New York  
 Article 10 Application  
**Figure 19-1: Sensitive Sound Receptors**

Sheet 2 of 3

- |                       |                                  |                              |                           |
|-----------------------|----------------------------------|------------------------------|---------------------------|
| <b>Structure</b>      | ● Wind Turbine                   | --- Buried Collection Line   | ■ POI Substation          |
| ● Residential         | ▲ Permanent Met Tower            | --- Overhead Collection Line | ■ Collector Substation    |
| ● Cabin               | ★ Hamlet                         | --- Access Road              | ■ O&M Building            |
| ● Non - Residential   | --- Trail                        | ■ School                     | ■ Laydown Yard            |
| ● Commercial          | --- Bike Route                   | ■ Local Park                 | --- 1-Mile Study Area     |
| ● Unknown             | --- NYSDEC Public Fishing Stream | ■ NYSDEC Land                | ■ Facility Site           |
| ⊕ Non - Participating |                                  | ■ Scenic Overlook            | --- City/Village Boundary |
| ○ Participating       |                                  | ■ Other Local Resource       | --- Town Boundary         |
|                       |                                  |                              | --- County Boundary       |

Notes: 1. Basemap: ESRI ArcGIS Online "World Imagery" map service. 2. This map was generated in ArcMap on November 20, 2017. 3. Structure receptor data dated October 17, 2017. 4. This is a color graphic. Reproduction in grayscale may misrepresent the data.