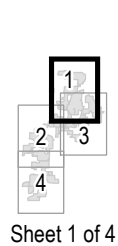


Baron Winds Project
 Towns of Cohocton, Dansville, Fremont, and
 Wayland - Steuben County, New York
 Article 10 Application
Figure 22-2: Delineated Wetlands

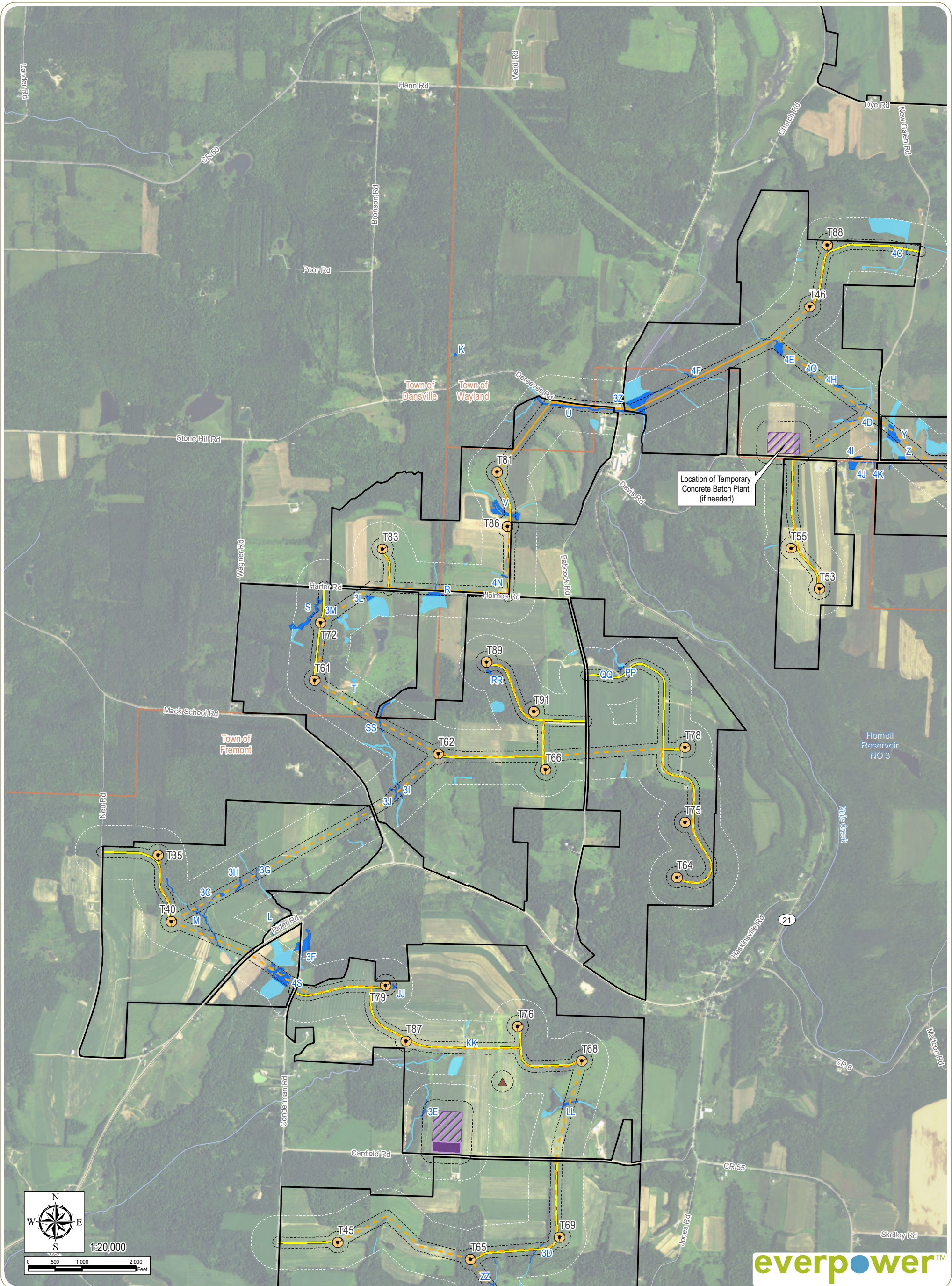


Sheet 1 of 4

- | | | |
|-----------------------------|--------------------------|-----------------------|
| Delineated Wetland/Stream | Wind Turbine | Collector Substation |
| Delineation Study Area | Permanent Met Tower | POI Substation |
| Approximated Wetland/Stream | Buried Collection Line | Facility Site |
| Approximation Study Area | Overhead Collection Line | City/Village Boundary |
| | Access Road | Town Boundary |
| | Laydown Yard | County Boundary |
| | O&M Building | |



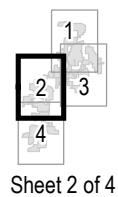
Notes: 1. Basemap: ESRI ArcGIS Online "World Imagery" map service. 2. This map was generated in ArcMap on November 21, 2017. 3. This is a color graphic. Reproduction in grayscale may misrepresent the data.



Baron Winds Project
 Towns of Cohocton, Dansville, Fremont, and
 Wayland - Steuben County, New York

Article 10 Application

Figure 22-2: Delineated Wetlands

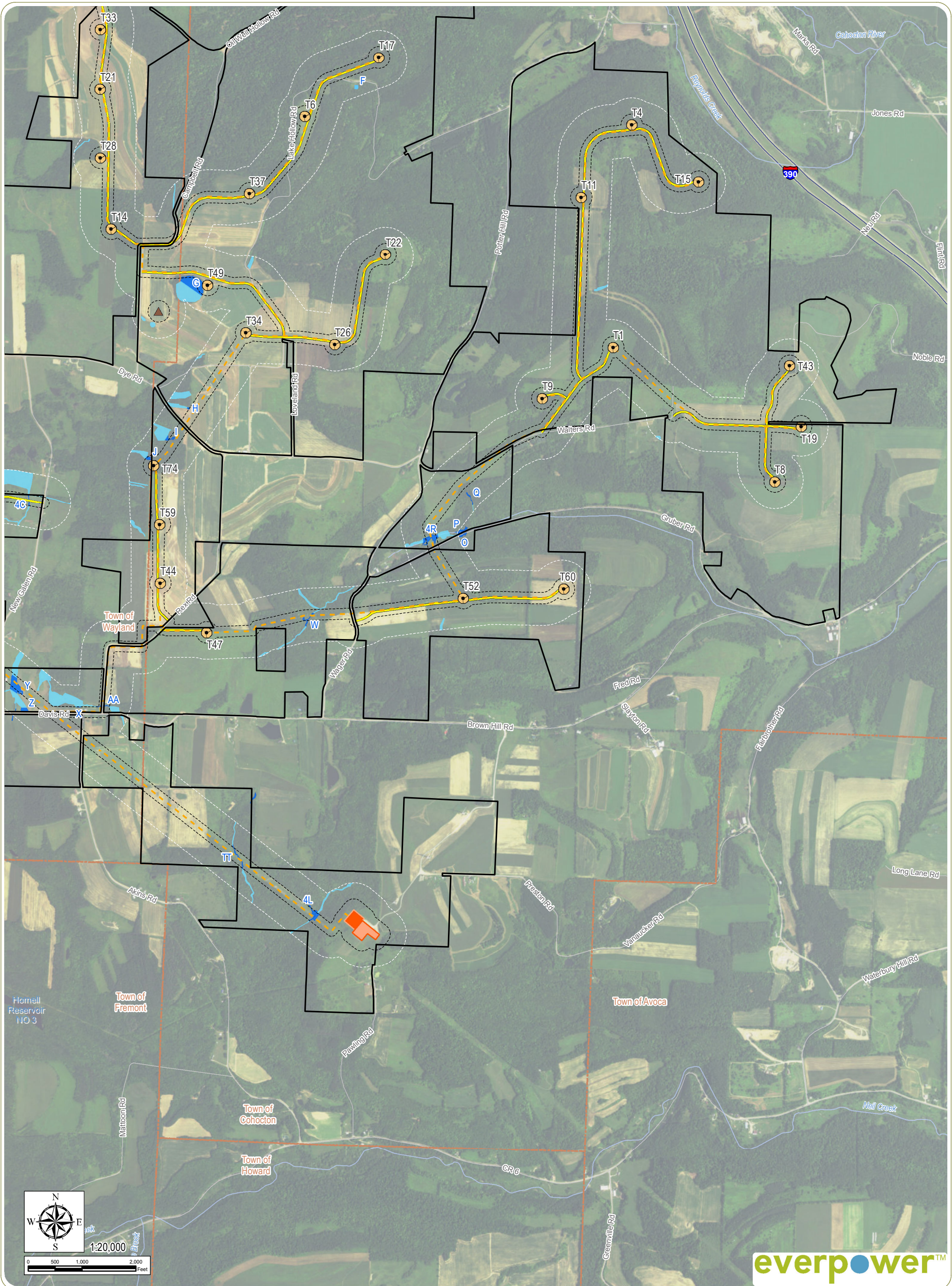


Sheet 2 of 4

- | | | |
|-----------------------------|--------------------------|-----------------------|
| Delineated Wetland/Stream | Wind Turbine | Collector Substation |
| Delineation Study Area | Permanent Met Tower | POI Substation |
| Approximated Wetland/Stream | Buried Collection Line | Facility Site |
| Approximation Study Area | Overhead Collection Line | City/Village Boundary |
| | Access Road | Town Boundary |
| | Laydown Yard | County Boundary |
| | O&M Building | |

Notes: 1. Basemap: ESRI ArcGIS Online "World Imagery" map service. 2. This map was generated in ArcMap on November 21, 2017. 3. This is a color graphic. Reproduction in grayscale may misrepresent the data.

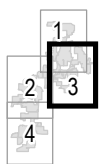




Baron Winds Project
 Towns of Cohocton, Dansville, Fremont, and
 Wayland - Steuben County, New York

Article 10 Application

Figure 22-2: Delineated Wetlands

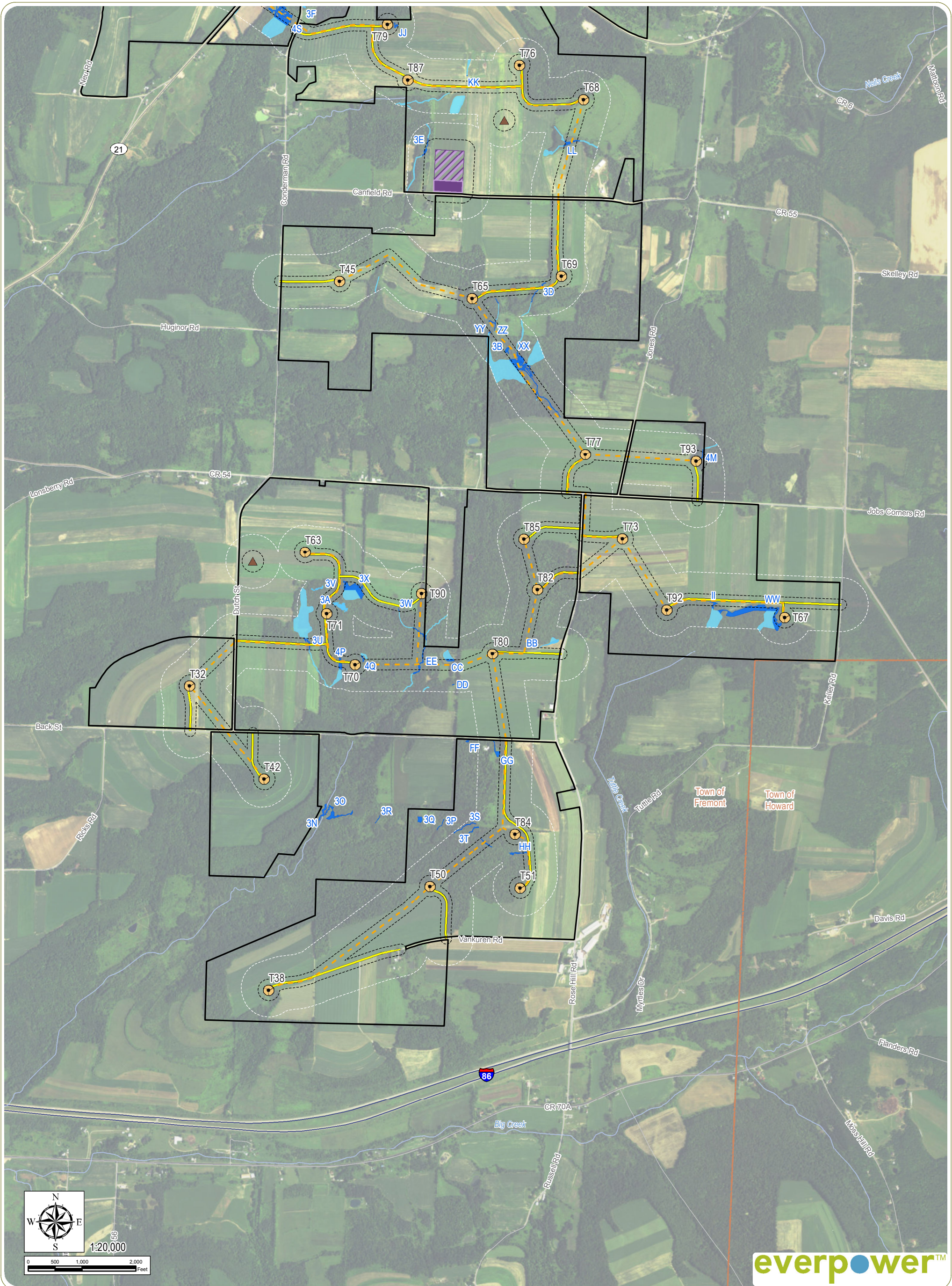


Sheet 3 of 4

- | | | |
|-----------------------------|--------------------------|-----------------------|
| Delineated Wetland/Stream | Wind Turbine | Collector Substation |
| Delineation Study Area | Permanent Met Tower | POI Substation |
| Approximated Wetland/Stream | Buried Collection Line | Facility Site |
| Approximation Study Area | Overhead Collection Line | City/Village Boundary |
| | Access Road | Town Boundary |
| | Laydown Yard | County Boundary |
| | O&M Building | |

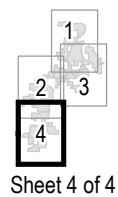
Notes: 1. Basemap: ESRI ArcGIS Online "World Imagery" map service. 2. This map was generated in ArcMap on November 21, 2017. 3. This is a color graphic. Reproduction in grayscale may misrepresent the data.





Baron Winds Project
 Towns of Cohocton, Dansville, Fremont, and
 Wayland - Steuben County, New York

Article 10 Application
Figure 22-2: Delineated Wetlands



Sheet 4 of 4

Notes: 1. Basemap: ESRI ArcGIS Online "World Imagery" map service. 2. This map was generated in ArcMap on November 21, 2017. 3. This is a color graphic. Reproduction in grayscale may misrepresent the data.

- | | | |
|-----------------------------|--------------------------|-----------------------|
| Delineated Wetland/Stream | Wind Turbine | Collector Substation |
| Delineation Study Area | Permanent Met Tower | POI Substation |
| Approximated Wetland/Stream | Buried Collection Line | Facility Site |
| Approximation Study Area | Overhead Collection Line | City/Village Boundary |
| | Access Road | Town Boundary |
| | Laydown Yard | County Boundary |
| | O&M Building | |



www.edrdpc.com