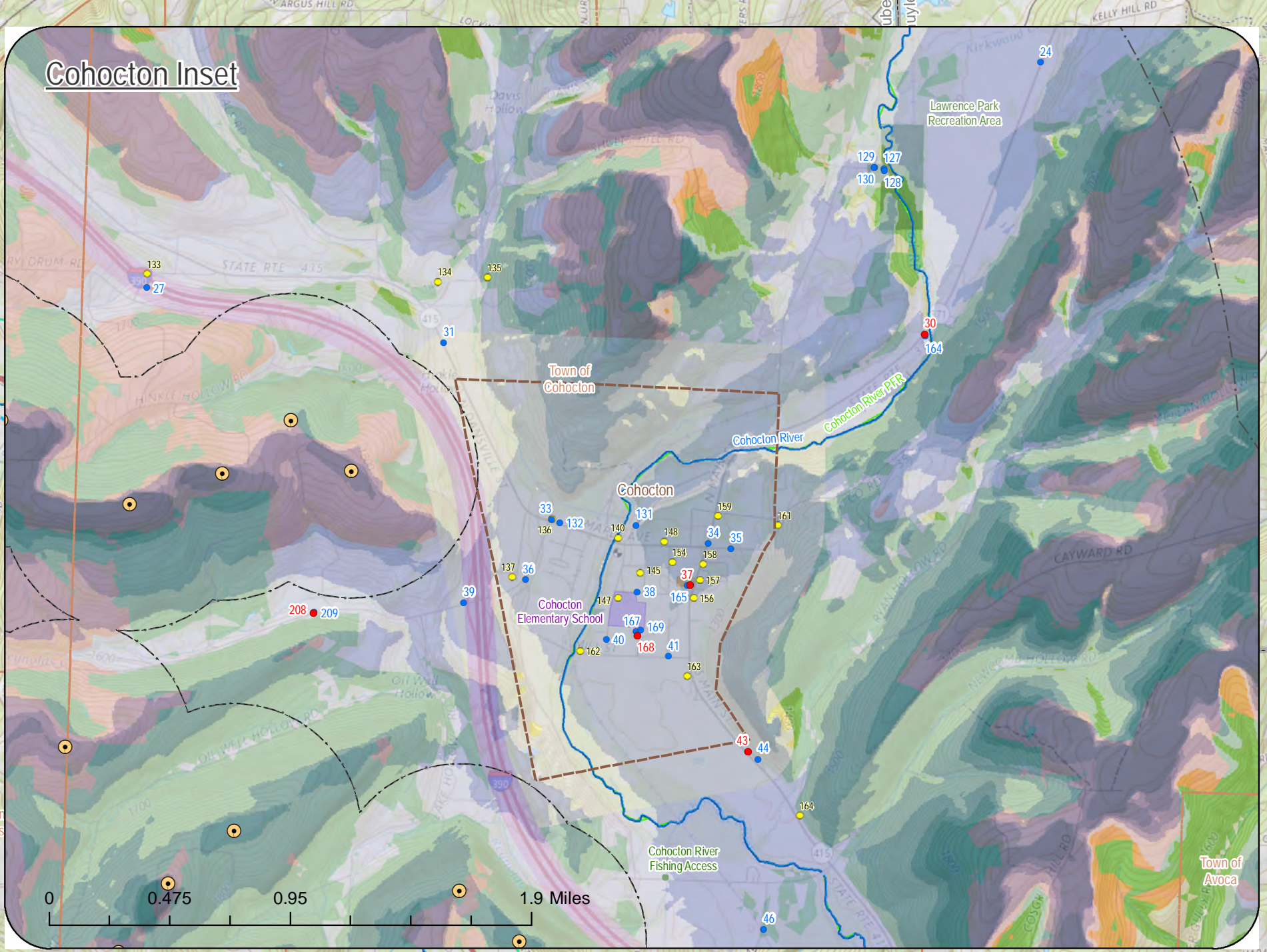
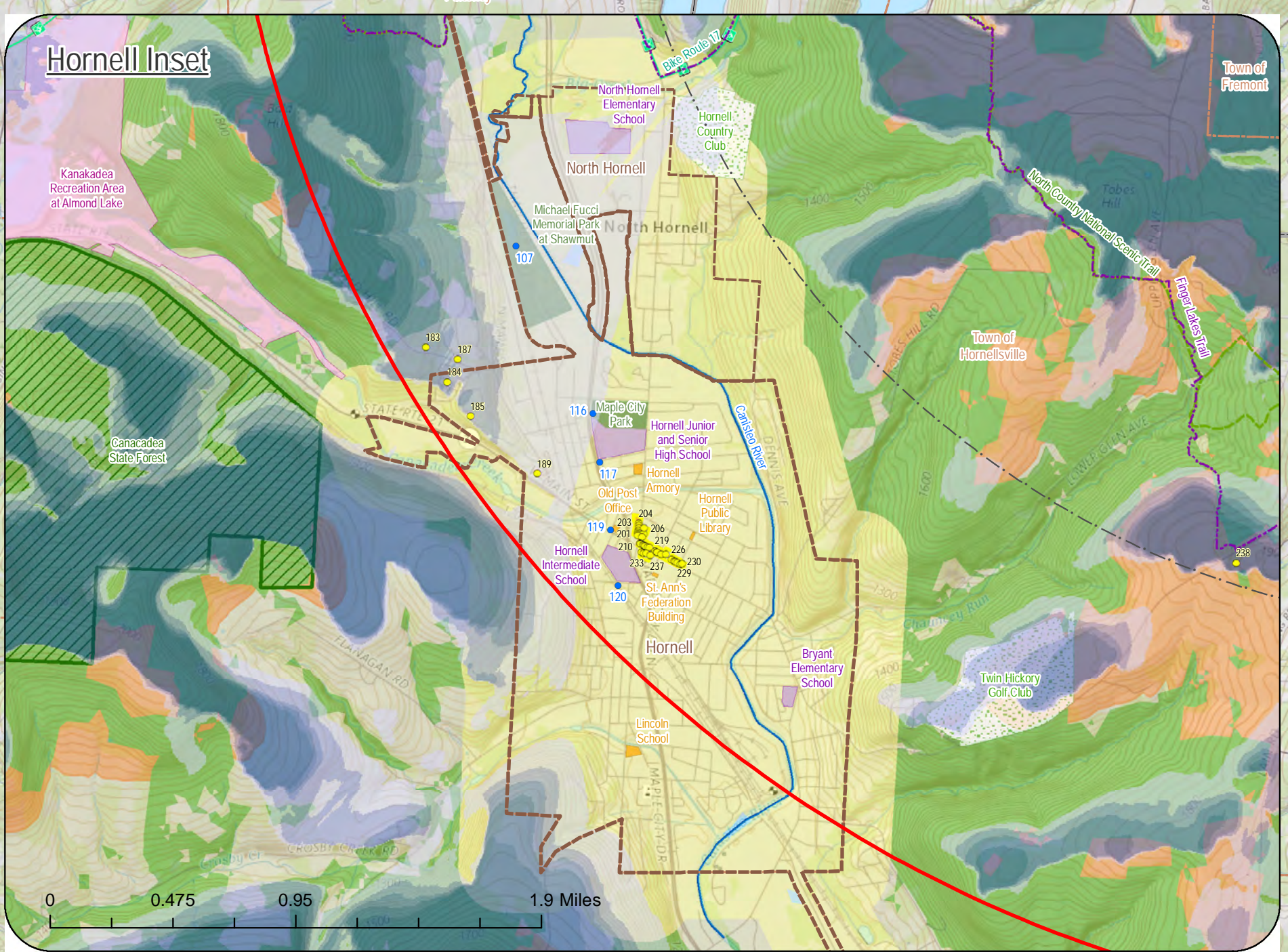
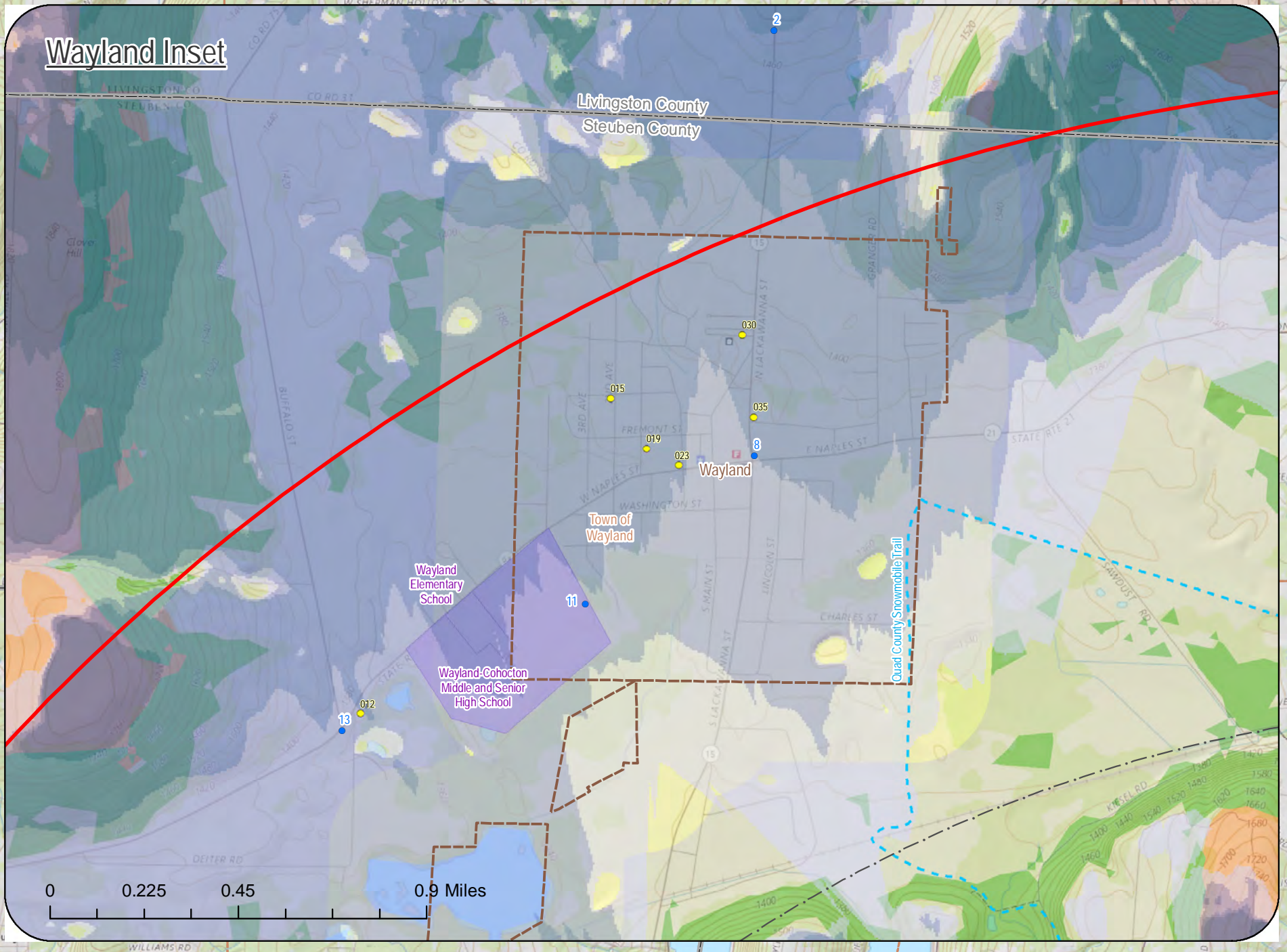
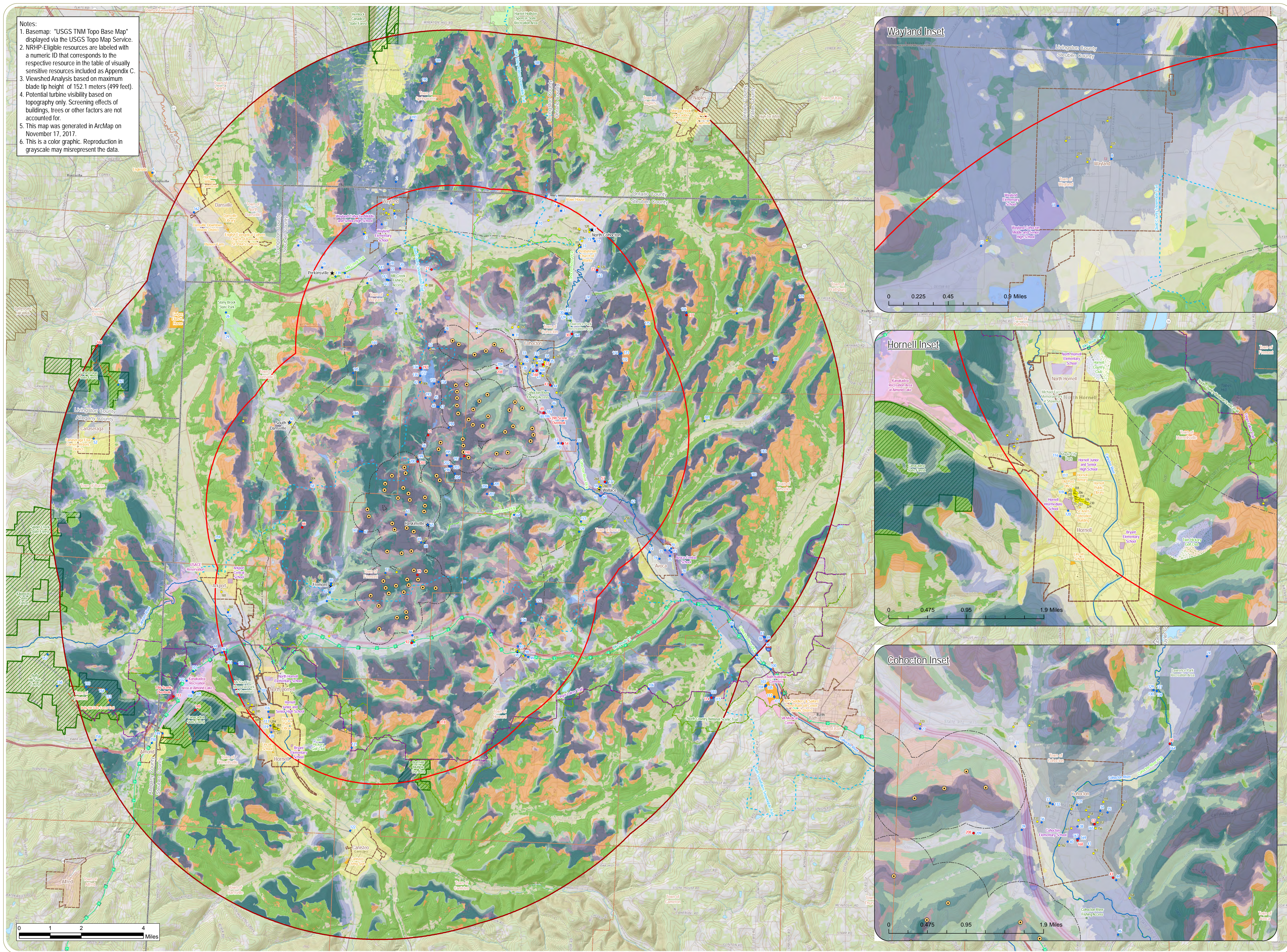


Notes:
 1. Basemap: "USGS TNM Topo Base Map" displayed via the USGS Topo Map Service.
 2. NRHP-Eligible resources are labeled with a numeric ID that corresponds to the respective resource in the table of visually sensitive resources included as Appendix C.
 3. Viewshed Analysis based on maximum blade tip height of 152.1 meters (499 feet).
 4. Potential turbine visibility based on topography only. Screening effects of buildings, trees or other factors are not accounted for.
 5. This map was generated in ArcMap on November 17, 2017.
 6. This is a color graphic. Reproduction in grayscale may misrepresent the data.



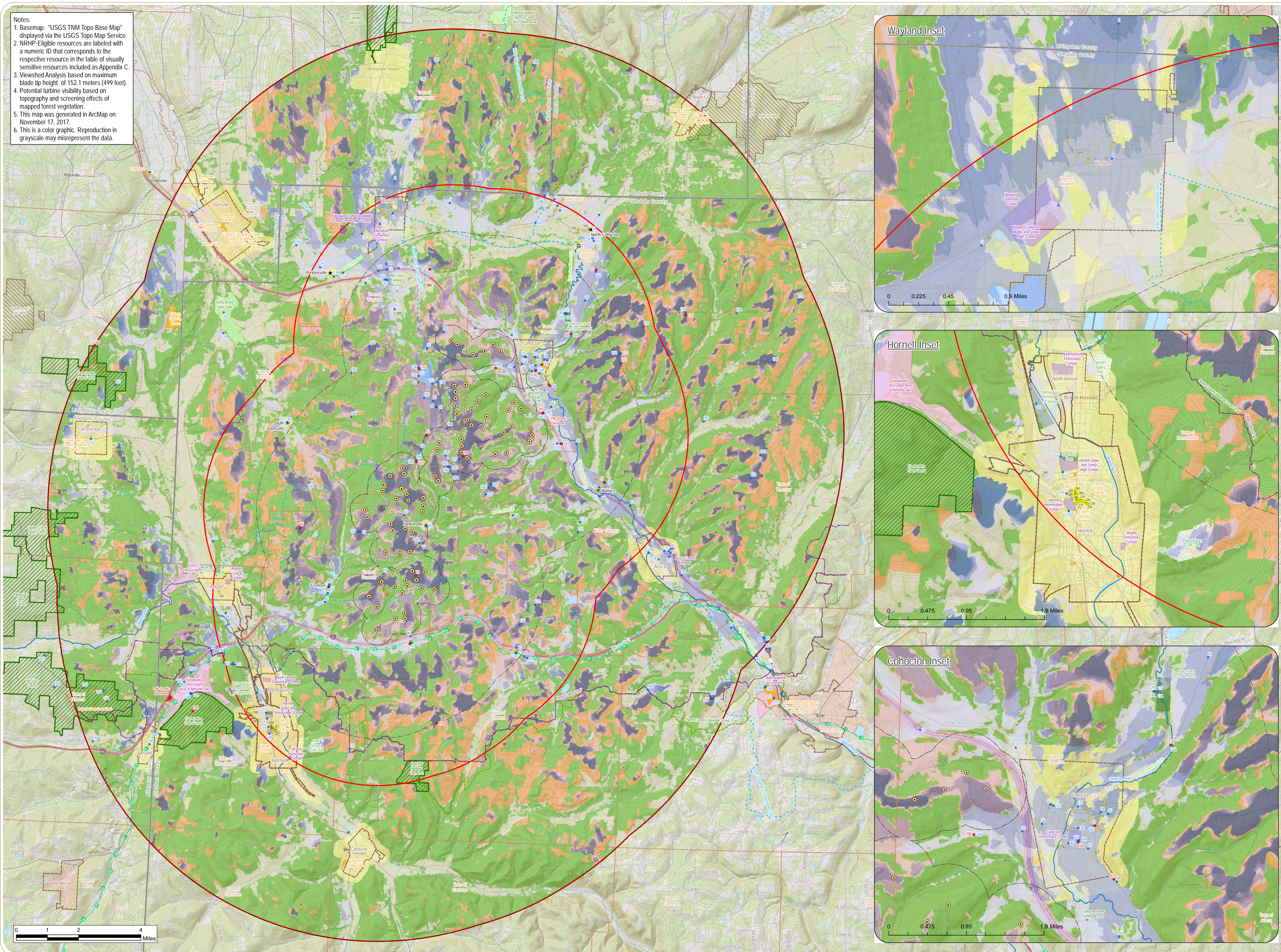
Baron Winds Project

Towns of Cohocton, Dansville, Fremont, and Wayland - Steuben County, New York
Appendix A: Composite Overlay Map
 Sheet 1: Wind Turbine Blade Tip Visibility Based on Topography Only

- Viewpoints**
- Viewpoint
 - Simulated Viewpoint
- Project Components**
- Wind Turbine
 - 5-Mile Study Area
 - 10-Mile Study Area
- Landscape Similarity Zones**
- Forest
 - Transportation Corridor
 - Rural Upland
 - Rural Valley
 - Village/Hamlet
 - Open Water/Waterfront
- Distance Zones**
- Foreground (<0.5 Mile) Distance Zone Limit
 - Mid-ground (0.5-3.5 Miles) Distance Zone Limit
- Viewshed Analysis**
- 1-15 Turbines Visible
 - 16-30 Turbines Visible
 - 31-45 Turbines Visible
 - 46-60 Turbines Visible
 - 61-76 Turbines Visible
- Visually Sensitive Resources**
- Hamlet
 - NRHP-Eligible Resource
 - North Country National Scenic Trail
 - Finger Lakes Trail
 - Nationwide Rivers Inventory
 - Bike Route
 - Snowmobile Trail
 - NYSDEC Public Fishing Stream
 - NYSDEC Trail
 - NRHP-Eligible District
 - NRHP-Listed Resource
 - Scenic Overlook
 - State Park
 - Wildlife Management Area
 - Other Resources of Statewide Significance
 - School
 - NYSDEC Land
 - Golf Course
 - Local Park
 - Other Local Resource
 - City/Village Boundary



Notes:
 1. Basemap: "USGS TNM Topo Base Map" displayed via the USGS Topo Map Service.
 2. NRHP-Eligible resources are labeled with a numeric ID that corresponds to the respective resource in the table of visually sensitive resources included as Appendix C.
 3. Viewshed Analysis based on maximum blade tip height of 152.1 meters (499 feet).
 4. Potential turbine visibility based on topography and screening effects of mapped forest vegetation.
 5. This map was generated in ArcMap on November 17, 2017.
 6. This is a color graphic. Reproduction in grayscale may misrepresent the data.



Baron Winds Project

Towns of Cohocton, Dansville, Fremont, and Wayland - Steuben County, New York

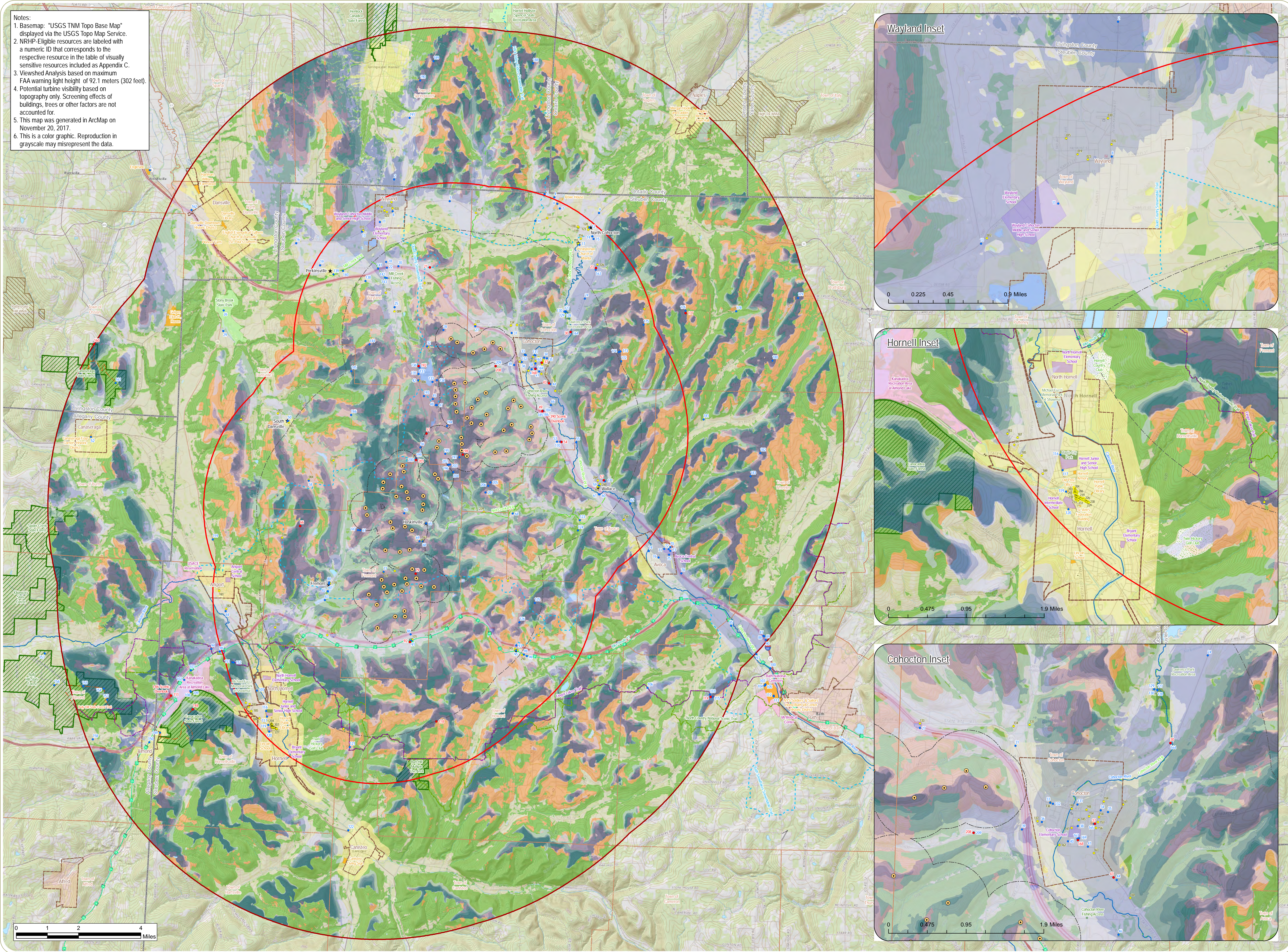
Appendix A: Composite Overlay Map

Sheet 2: Wind Turbine Blade Tip Visibility Based on Topography and Vegetation

- Viewpoints**
- Viewpoint
 - Simulated Viewpoint
- Project Components**
- Wind Turbine
 - 5-Mile Study Area
 - 10-Mile Study Area
- Landscape Similarity Zones**
- Forest
 - Transportation Corridor
 - Rural Upland
 - Rural Valley
 - Village/Hamlet
 - Open Water/Waterfront
- Distance Zones**
- Foreground (<0.5 Mile) Distance Zone Limit
 - Mid-ground (0.5-3.5 Miles) Distance Zone Limit
- Viewshed Analysis**
- 1-15 Turbines Visible
 - 16-30 Turbines Visible
 - 31-45 Turbines Visible
 - 46-60 Turbines Visible
 - 61-76 Turbines Visible
- Visually Sensitive Resources**
- Hamlet
 - NRHP-Eligible Resource
 - North Country National Scenic Trail
 - Finger Lakes Trail
 - Nationwide Rivers Inventory
 - Bike Route
 - Snowmobile Trail
 - NYSDEC Public Fishing Stream
 - NYSDEC Trail
 - NRHP-Eligible District
 - NRHP-Listed Resource
 - Scenic Overlook
 - State Park
 - Wildlife Management Area
 - Other Resources of Statewide Significance
 - School
 - NYSDEC Land
 - Golf Course
 - Local Park
 - Other Local Resource
 - City/Village Boundary



Notes:
 1. Basemap: "USGS TNM Topo Base Map" displayed via the USGS Topo Map Service.
 2. NRHP-Eligible resources are labeled with a numeric ID that corresponds to the table of visually sensitive resources included as Appendix C.
 3. Viewshed Analysis based on maximum FAA warning light height of 92.1 meters (302 feet).
 4. Potential turbine visibility based on topography only. Screening effects of buildings, trees or other factors are not accounted for.
 5. This map was generated in ArcMap on November 20, 2017.
 6. This is a color graphic. Reproduction in grayscale may misrepresent the data.



Baron Winds Project

Towns of Cohocton, Dansville, Fremont, and Wayland - Steuben County, New York

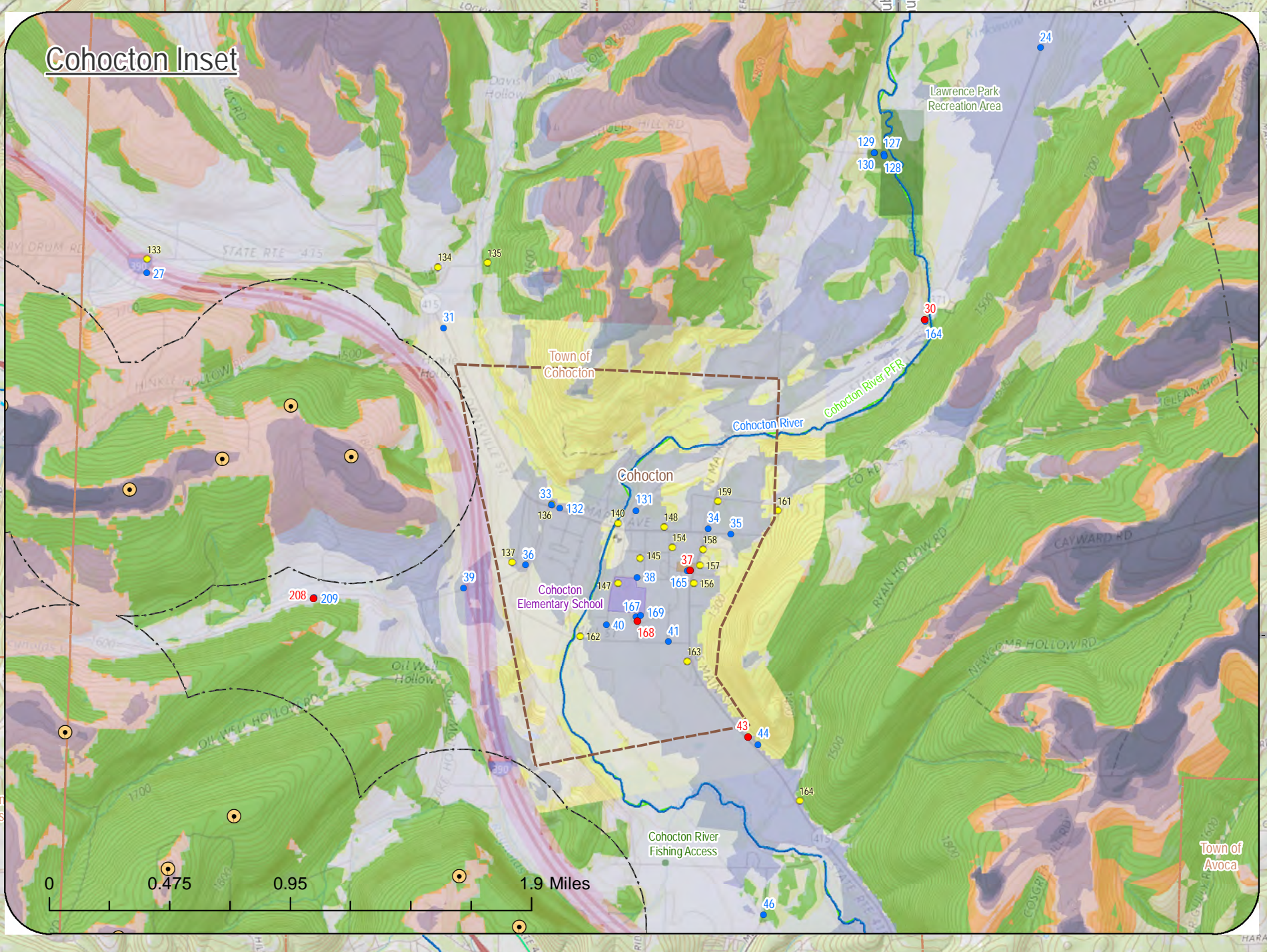
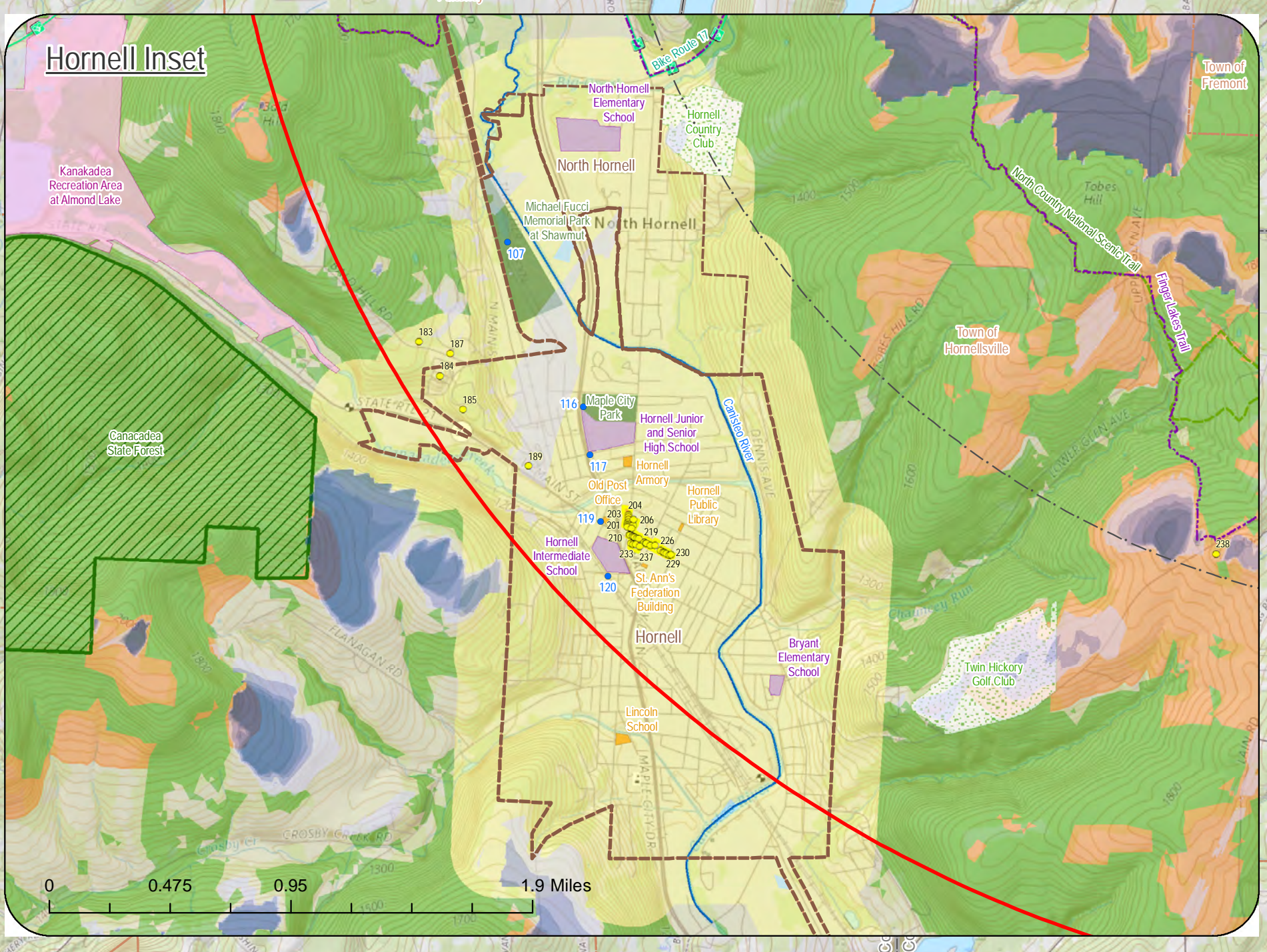
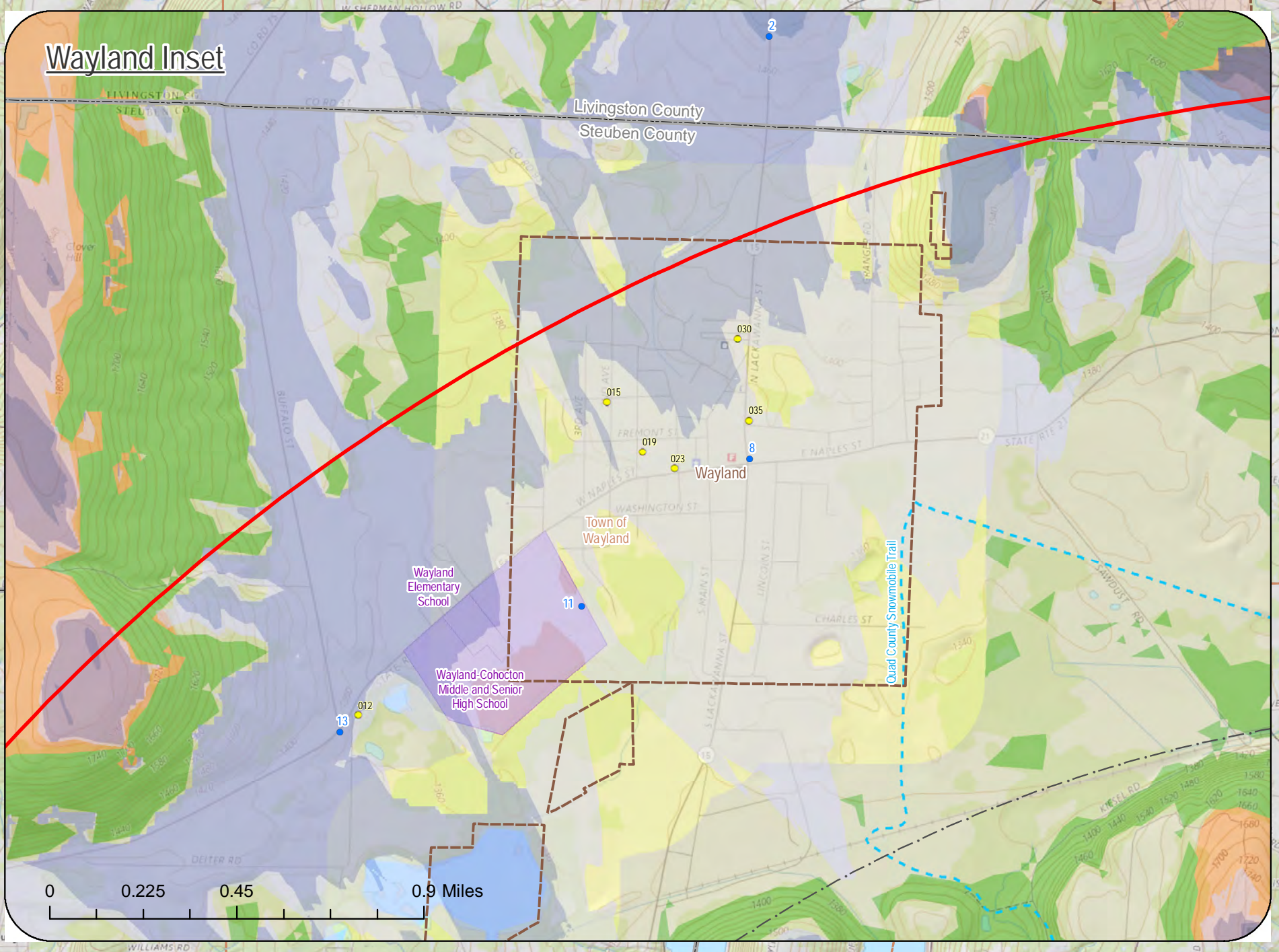
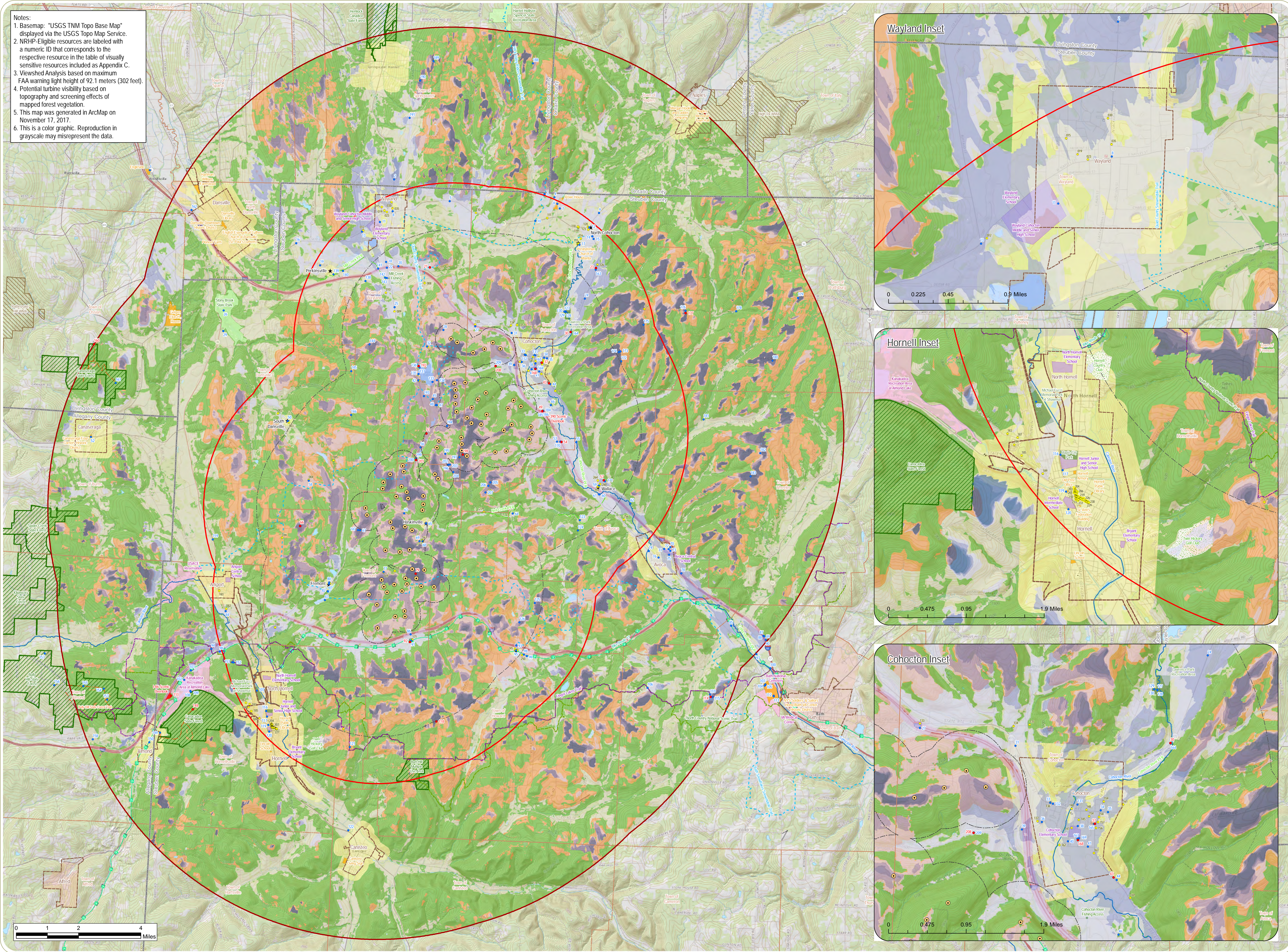
Appendix A: Composite Overlay Map

Sheet 3: Wind Turbine FAA Warning Light Visibility Based on Topography Only

- Viewpoints**
- Viewpoint
 - Simulated Viewpoint
- Project Components**
- Wind Turbine
 - 5-Mile Study Area
 - 10-Mile Study Area
- Landscape Similarity Zones**
- Forest
 - Transportation Corridor
 - Rural Upland
 - Rural Valley
 - Village/Hamlet
 - Open Water/Waterfront
- Distance Zones**
- Foreground (<0.5 Mile) Distance Zone Limit
 - Mid-ground (0.5-3.5 Miles) Distance Zone Limit
- Viewshed Analysis**
- 1-15 Turbines Visible
 - 16-30 Turbines Visible
 - 31-45 Turbines Visible
 - 46-60 Turbines Visible
 - 61-76 Turbines Visible
- Visually Sensitive Resources**
- Hamlet
 - NRHP-Eligible Resource
 - North Country National Scenic Trail
 - Finger Lakes Trail
 - Nationwide Rivers Inventory
 - Bike Route
 - Snowmobile Trail
 - NYSDEC Public Fishing Stream
 - NYSDEC Trail
 - NRHP-Eligible District
 - NRHP-Listed Resource
 - Scenic Overlook
 - State Park
 - Wildlife Management Area
 - Other Resources of Statewide Significance
 - School
 - NYSDEC Land
 - Golf Course
 - Local Park
 - Other Local Resource
 - City/Village Boundary



Notes:
 1. Basemap: "USGS TNM Topo Base Map" displayed via the USGS Topo Map Service.
 2. NRHP-Eligible resources are labeled with a numeric ID that corresponds to the table of visually sensitive resources included as Appendix C.
 3. Viewshed Analysis based on maximum FAA warning light height of 92.1 meters (302 feet).
 4. Potential turbine visibility based on topography and screening effects of mapped forest vegetation.
 5. This map was generated in ArcMap on November 17, 2017.
 6. This is a color graphic. Reproduction in grayscale may misrepresent the data.



Baron Winds Project

Towns of Cohocton, Dansville, Fremont, and Wayland - Steuben County, New York
Appendix A: Composite Overlay Map
 Sheet 4: Wind Turbine FAA Warning Light Visibility Based on Topography and Vegetation

- Viewpoints**
- Viewpoint
 - Simulated Viewpoint
- Project Components**
- Wind Turbine
 - 5-Mile Study Area
 - 10-Mile Study Area
- Landscape Similarity Zones**
- Forest
 - Transportation Corridor
 - Rural Upland
 - Rural Valley
 - Village/Hamlet
 - Open Water/Waterfront
- Distance Zones**
- Foreground (<0.5 Mile) Distance Zone Limit
 - Mid-ground (0.5-3.5 Miles) Distance Zone Limit
- Viewshed Analysis**
- 1-15 Turbines Visible
 - 16-30 Turbines Visible
 - 31-45 Turbines Visible
 - 46-60 Turbines Visible
 - 61-76 Turbines Visible
- Visually Sensitive Resources**
- Hamlet
 - NRHP-Eligible Resource
 - North Country National Scenic Trail
 - Finger Lakes Trail
 - Nationwide Rivers Inventory
 - Bike Route
 - Snowmobile Trail
 - NYSDEC Public Fishing Stream
 - NYSDEC Trail
 - NRHP-Eligible District
 - NRHP-Listed Resource
 - Scenic Overlook
 - State Park
 - Wildlife Management Area
 - Other Resources of Statewide Significance
 - School
 - NYSDEC Land
 - Golf Course
 - Local Park
 - Other Local Resource
 - City/Village Boundary

