



**~15%**  
of UK electricity generated



**~14m**  
equivalent UK homes powered



**€8bn net**  
expected investment in clean  
energy infrastructure 2024-2030



**~3,100**  
UK based employees

**UK**



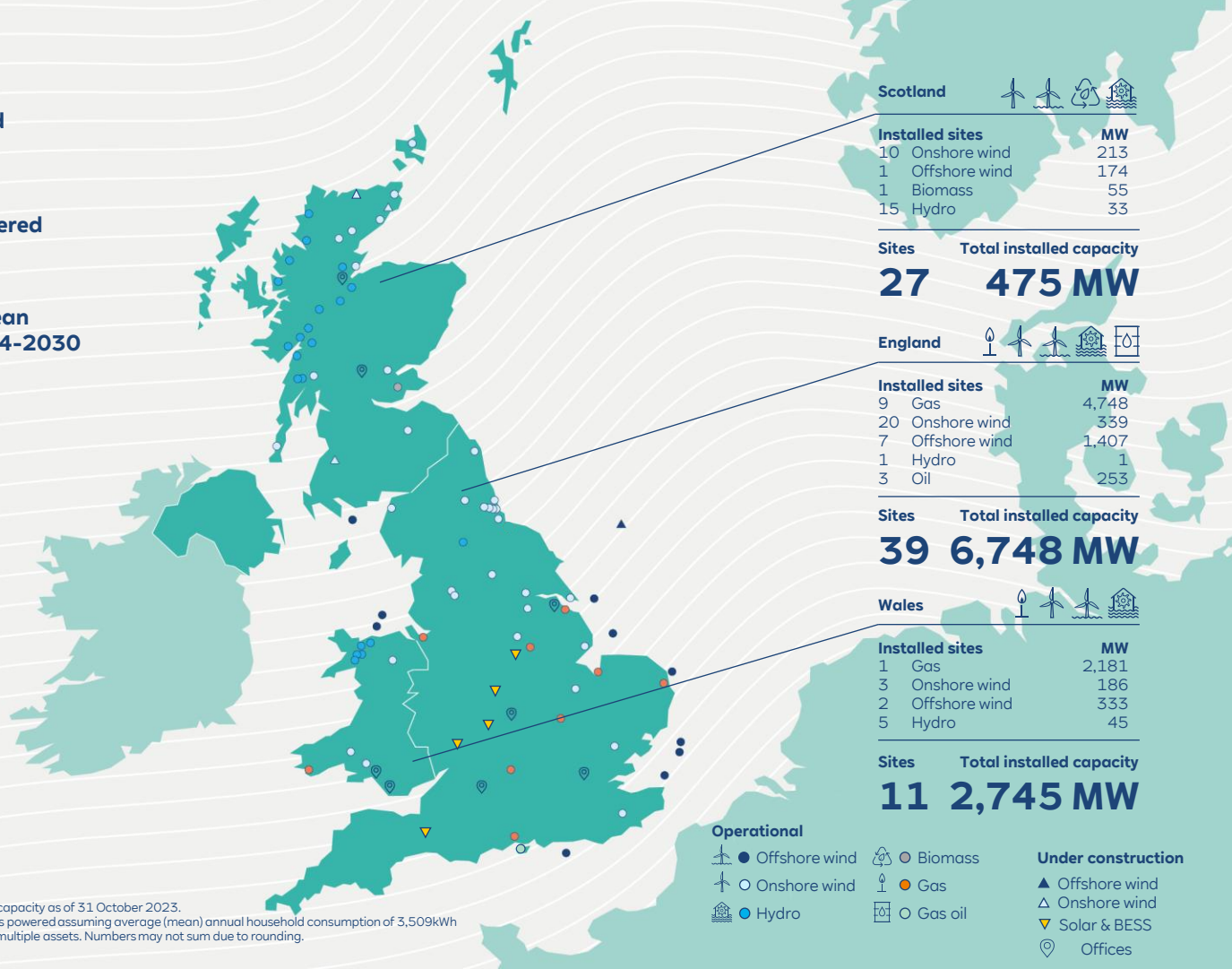
In operation	MW
10 Gas	6,929
33 Onshore wind	738
10 Offshore wind	1,912
1 Biomass	55
21 Hydro	78
3 Gas oil	253

Sites in operation	Total installed capacity
<b>77</b>	<b>9,968 MW</b>

Under construction	MW
Offshore wind	1,400
Onshore wind	168
Solar & co-located battery (BESS)	375

MW: pro rata, based on equity share. Operational capacity as of 31 October 2023.  
15% based on 2022 generation. Equivalent homes powered assuming average (mean) annual household consumption of 3,509kWh  
Site placing is approximate. Some locations have multiple assets. Numbers may not sum due to rounding.

RWE



**Scotland**



Installed sites	MW
10 Onshore wind	213
1 Offshore wind	174
1 Biomass	55
15 Hydro	33

Sites	Total installed capacity
<b>27</b>	<b>475 MW</b>

**England**



Installed sites	MW
9 Gas	4,748
20 Onshore wind	339
7 Offshore wind	1,407
1 Hydro	1
3 Oil	253

Sites	Total installed capacity
<b>39</b>	<b>6,748 MW</b>

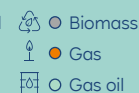
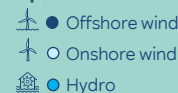
**Wales**



Installed sites	MW
1 Gas	2,181
3 Onshore wind	186
2 Offshore wind	333
5 Hydro	45

Sites	Total installed capacity
<b>11</b>	<b>2,745 MW</b>

**Operational**



**Under construction**

